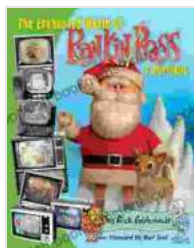


Unveiling the Enchanting World of Rankin/Bass: A Journey Through Nostalgic Animation Classics



: Stepping into the Magical Kingdom of Rankin and Bass

For generations, the animation studio of Rankin/Bass has captivated audiences with its enchanting productions that have become synonymous with the holidays and childhood memories. From the beloved "Rudolph the Red-Nosed Reindeer" to the heartwarming "Frosty the Snowman," Rankin/Bass's creations have woven their way into the fabric of our cultural heritage.



THE ENCHANTED WORLD OF RANKIN/BASS: A PORTFOLIO by Rick Goldschmidt

★★★★☆ 4.6 out of 5

Language : English
File size : 18498 KB
Text-to-Speech : Enabled
Screen Reader : Supported
Enhanced typesetting : Enabled
Word Wise : Enabled
Lending : Enabled



In this article, we embark on a nostalgic journey into the whimsical world of Rankin/Bass. We delve into the studio's history, explore the unforgettable characters and stories that have touched our hearts, and uncover the innovative techniques and artistry that brought these animated wonders to life.

A Brief History: The Birth of Rankin/Bass and Their Enduring Legacy

The story of Rankin/Bass begins in the 1950s when producers Arthur Rankin Jr. and Jules Bass formed their own animation studio. Their initial focus was on creating children's programming for television, but their true

breakthrough came in 1964 with the production of "Rudolph the Red-Nosed Reindeer."

The success of "Rudolph" not only established Rankin/Bass as a major force in animation but also set the template for their future productions. The studio's signature style, characterized by its distinctive stop-motion animation, hand-painted cels, and unforgettable musical scores, became synonymous with the holiday season.

Over the years, Rankin/Bass produced a wide range of animated specials and feature films that have become classics in their own right. From the enchanting "Frosty the Snowman" and "Santa Claus Is Comin' to Town" to the epic "The Hobbit" and "The Flight of Dragons," their works continue to entertain and inspire audiences of all ages.

Unforgettable Characters: The Heart and Soul of the Rankin/Bass Universe

At the core of every Rankin/Bass production is a cast of unforgettable characters that have become etched in our collective memory. From the misfit toys of "Rudolph" to the gentle giant of "Frosty," these characters embody the spirit of Christmas, friendship, and the triumph of the underdog.



Rudolph, the iconic reindeer with a glowing red nose, has become a symbol of acceptance and individuality. His journey from being an outcast to becoming a hero teaches us the importance of embracing our differences and celebrating the things that make us unique.

Frosty the Snowman, with his infectious laughter and unwavering optimism, reminds us of the power of friendship and the magic of the holiday season. His adventures with the children of North Pole City teach us the importance of believing in ourselves and the dreams we hold dear.

Innovative Techniques: The Magic Behind the Rankin/Bass Classics

Rankin/Bass's animations were renowned for their innovative techniques and artistry. The studio pioneered the use of stop-motion animation, a technique that involves moving models frame by frame to create the illusion

of movement. This meticulous process resulted in the distinctive, almost dream-like quality that characterized their productions.



In addition to stop-motion, Rankin/Bass also employed traditional hand-drawn cel animation for certain elements of their productions. This combination of techniques allowed them to create a unique and visually stunning style that set their work apart from other animated studios.

The studio's musical scores were also an integral part of their productions. The catchy and memorable songs written by the Sherman brothers, who composed the music for many of Rankin/Bass's holiday specials, have become synonymous with the season. Songs like "Rudolph the Red-Nosed Reindeer" and "Frosty the Snowman" are beloved by generations of fans.

Enduring Impact: The Legacy of Rankin/Bass in Popular Culture

The legacy of Rankin/Bass extends far beyond the animated specials and feature films they produced. Their creations have left an enduring impact on popular culture, inspiring countless other works of art, entertainment, and merchandising.



Rudolph the Red-Nosed Reindeer has become a ubiquitous symbol of the Christmas season. His image and likeness can be found on everything from ornaments and toys to clothing and home décor. Frosty the Snowman,

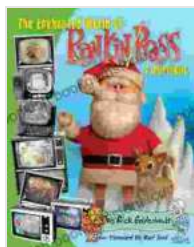
too, has become a beloved holiday icon, with his likeness adorning everything from plush toys to animated specials and merchandise.

The influence of Rankin/Bass's work can also be seen in contemporary animated productions. Pixar's "Toy Story" and DreamWorks' "Shrek" both feature elements that pay homage to Rankin/Bass's signature style. The stop-motion animation technique continues to be used in contemporary films such as "Wes Anderson's Fantastic Mr. Fox" and "Laika's Kubo and the Two Strings."

: A Timeless Treasure Trove of Animated Nostalgia

The enchanted world of Rankin/Bass is a timeless treasure trove of animated nostalgia that continues to captivate audiences of all ages. From the endearing characters and heartwarming stories to the innovative animation techniques and memorable musical scores, Rankin/Bass's productions have left an enduring legacy in the world of entertainment.

As we cherish the memories and revisit the animated classics of Rankin/Bass, we celebrate the imagination and artistry that brought these magical worlds to life. Their creations have woven their way into our cultural fabric, becoming an integral part of our childhoods and the cherished traditions of the holiday season.



THE ENCHANTED WORLD OF RANKIN/BASS: A PORTFOLIO by Rick Goldschmidt

★★★★☆ 4.6 out of 5

Language : English

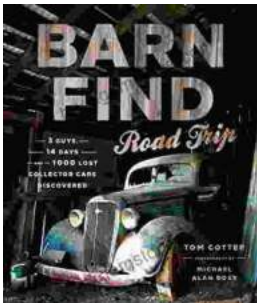
File size : 18498 KB

Text-to-Speech : Enabled

Screen Reader : Supported

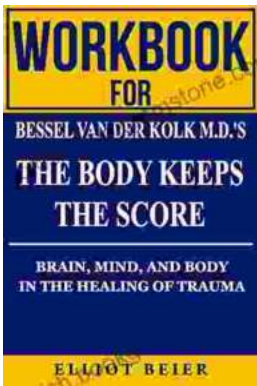
Enhanced typesetting : Enabled

Word Wise : Enabled
Lending : Enabled



Barn Find Road Trip: Unearthing Hidden Automotive Treasures

In the realm of automotive enthusiasts, there exists an almost mythical allure to the concept of barn finds - classic or unique cars that have been left...



Workbook for Bessel van der Kolk's "The Body Keeps the Score": A Comprehensive Guide to Healing Trauma through Mind-Body Integration

Trauma is a pervasive issue that affects millions of people worldwide. Bessel van der Kolk's groundbreaking book, "The Body Keeps the Score," has revolutionized our...